

# Magellan® TRX7 CS Pro

## Off-Road GPS Navigator



## Quick Start Guide



# Safety.

The Magellan TRX7 CS Pro is an Off-Road vehicle navigation aid designed to assist you in driving on your route and arriving at your selected destinations.

Please check with your state or local law enforcement for applicable regulations regarding mounting to the windshield.

The driver should enter data or program the Magellan receiver only when the vehicle is stopped. Only a vehicle passenger should enter data or program the receiver while the vehicle is moving.

It is your responsibility to comply with all traffic laws.

Every attempt is made to ensure that the database is accurate. However, roadways, points of interest (POIs), and business and service locations may change over time.

Keep the receiver safe from extreme temperature conditions. For example, do not leave it exposed to direct sunlight for an extended period of time. The maximum operating temperature is 140°F (60°C).

Take care when mounting the receiver in your vehicle, whether using the windshield mount or other mount or accessories, that it does not obstruct the driver's view of the road, interfere with the operation of the vehicle's safety devices such as airbags, or present a hazard to occupants of the vehicle should the receiver be dislodged while driving.

You assume the risks associated with damage to your vehicle or vehicle occupants as the result of your choices in mounting the receiver.

The battery is rechargeable and should not be removed. In the event it should need to be replaced, please contact Magellan Technical Support.

## FCC RF Radiation Exposure Statement

1. This Transmitter must not be co-located or operating in conjunction with any other antenna or transmitter.
2. This equipment complies with FCC RF radiation exposure limits set forth for an uncontrolled environment. This equipment should be installed and operated with a minimum distance of 20 centimeters between the radiator and your body.

WIFI 5G Band 1 is for indoor use only.

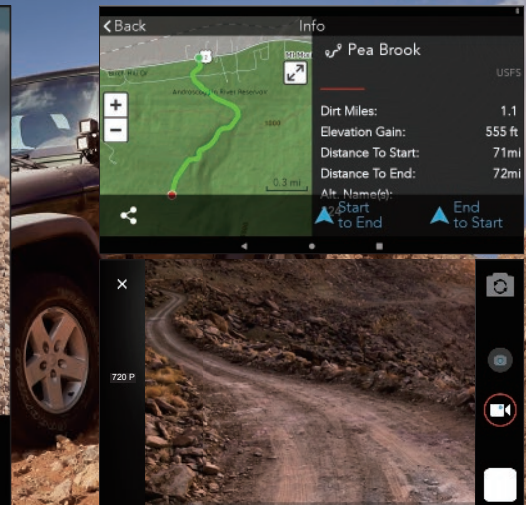
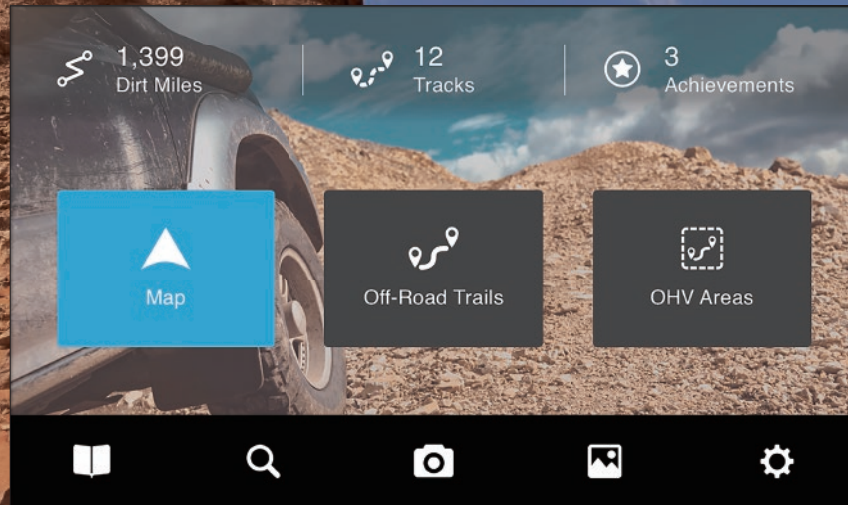
## Magellan Take-Back Program

Magellan's Take-Back Program provides a way for consumers to recycle certain Magellan equipment. As part of this program, all Magellan GPS models will be accepted.

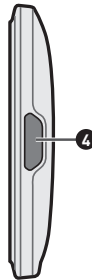
Visit [magellanGPS.com](https://www.magellanGPS.com) for more information.

Magellan TRX7 CS Pro connects you to the ultimate off-highway navigation experience. Find Trails and create custom Routes for street-to-trail navigation. Record your Tracks and Waypoints as you explore. Take photos and videos during your journey. Review and share your experiences with friends and view Tracks shared by other TRX users so that you're always informed about the latest off-highway information.

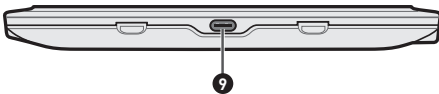
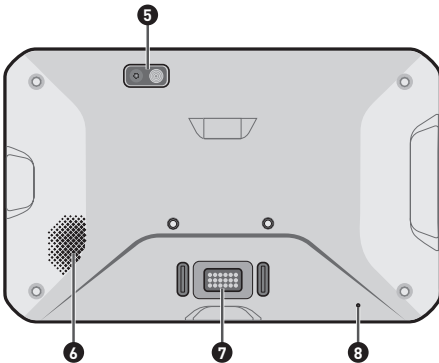
It all starts with Magellan TRX7 CS Pro.



# TRX7 CS Pro Hardware.



- 1. Power button
- 2. Touchscreen
- 3. Microphone
- 4. Memory card slot
- 5. Camera lens with flash light
- 6. Speaker
- 7. Pogo pins
- 8. Microphone
- 9. Micro-USB port



This Quick Start Guide will provide you with the essential info you need to get started with your Magellan TRX7 CS Pro. Find more tutorials, videos, and support for your TRX at [trxsupport.magellangps.com](http://trxsupport.magellangps.com).

Connect with us  
[@MagellanTRX](#)



## Install the TRX.

1. Find a location with a clear view of the sky.
2. **Mount the TRX in your vehicle**

Clean the area on the windshield where you want to mount the device. Allow the surface to dry.

Screw the mount baseplate on the cradle. Attach the device onto the mount. Attach the mount to the vehicle.

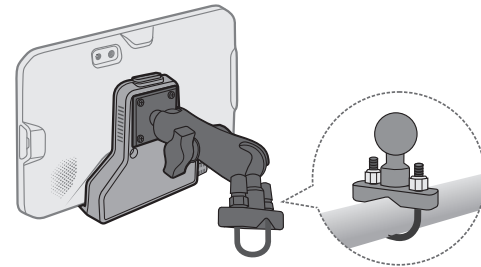
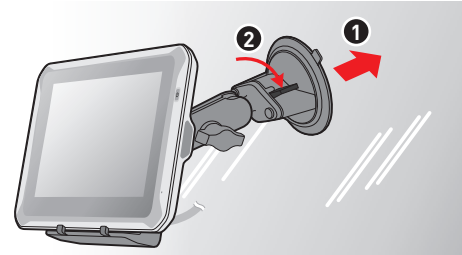
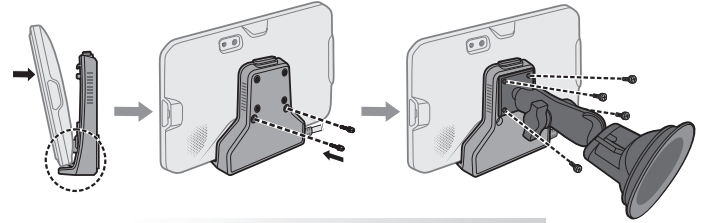
### Mount the TRX on your ATV/OHM

Use the U-mount accessory kit to mount the TRX on the handle bar of your ATV/OHM.

**Note:** RAM suction and U-Bolt mounts both require additional assembly.

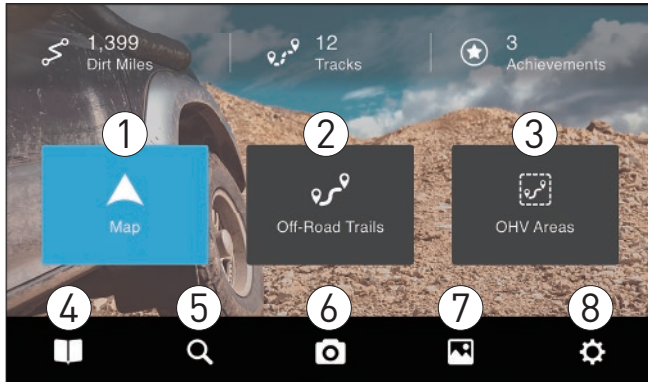
3. Plug the device into your Vehicle Power Outlet using the Vehicle Power Adapter supplied with your TRX. Please use only the supplied VPA.

**Note:** Go to [trxsupport.magellangps.com](https://trxsupport.magellangps.com) for articles and videos about setting up and operating your TRX, and get in touch with our Magellan TRX Support team via email at [trxsupport@magellangps.com](mailto:trxsupport@magellangps.com).

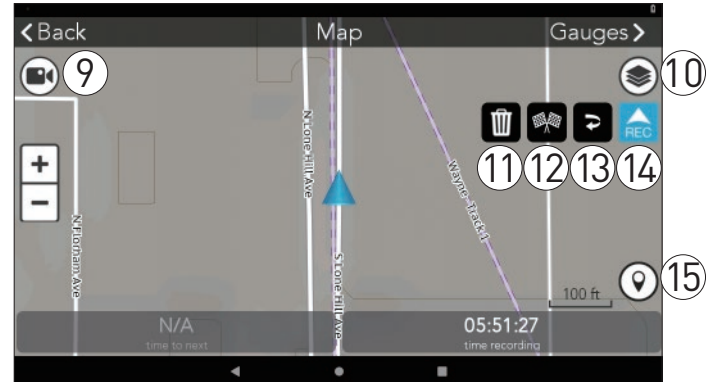


# TRX7 CS Pro Software.

## TRX7 CS Pro Dashboard Screen



## TRX7 CS Pro Map Screen (paused)




- 1 Map:** Tap to open the Map screen.
- 2 Off-Road Trails:** Quick search for off-road trails nearby.
- 3 OHV Areas:** Quick search for OHV areas nearby.
- 4 Journal:** Contains your Logs & Plans.
- 5 Search:** Search for Trails, Tracks, POIs, etc.
- 6 Camera:** Tap to open the Camera app.
- 7 Album:** Tap to open the Album app.
- 8 Settings:** Edit account, vehicle profiles, connectivity, etc.
- 9 DVR:** Tap to open DashCam.
- 10 Map Options:** View map display settings.
- 11 Delete:** Discard current Track.
- 12 Finish:** Save Track with details and commentary.
- 13 Backtrack:** Follow active Track back to starting point.
- 14 Start/Pause:** Tap to pause tracking or resume tracking.
- 15 Waypoint:** Mark Waypoints while driving or recording a Track.

# Get Started.

## 1. Power On.


Press and hold the Power button to turn the device on.

## 2. Connect to WIFI.

1. Tap **Settings**  from the TRX Dashboard.
2. Scroll down to **WIFI** > tap the check box next to the **WIFI** option to see available networks.
3. Tap the network you want to connect to.
4. Enter WIFI password (if applicable).
5. Tap **Connect**.


## 3. Update Software + Maps.

**Note:** WIFI must be ON to get updates as well as to sync your TRX with your TRX Trailhead account. You must also have a good internet connection to complete updates.

1. Tap **Settings**  from the TRX Dashboard.
2. Tap **Updates** > **Software Update** or **Map Update**.

3. Follow the instructions to update to the latest software version or download the latest map data.

## 4. Create Your TRX Account.

1. Tap **Settings**  from the TRX Dashboard.
2. Tap **Account Profile**.
3. Enter your account details. Use your existing **MagellanGPS.com** account if you have one.
4. Tap **Create Account** to confirm your account details. If you used an existing **MagellanGPS.com** account, your TRX will be registered to that account.

A MagellanGPS.com account will also be created if you're new to Magellan and you're registering an email address for the first time.

Go to [www.TRXTrailhead.com](http://www.TRXTrailhead.com) once you've created your account > enter your email and password to log in with your TRX/Magellan GPS account.

## 5. Get a GPS Signal.

1. Access to the device's Settings app.
2. Scroll down to **Security & location** > tap **Location**.
3. Slide **User location** button to **On** to let the device apps use your location information.

### Important


Various factors influence GPS signal reception and there are some tips you can follow to improve the signal reception and time it takes to calculate the current location.

- Leave any enclosed structure, (garage, parking structures, etc.).
- Make sure you have a 'clear view of the sky'. Buildings and trees can have an impact on GPS signal reception.
- Be sure that the device is mounted where it can have a clear line of sight to the windshield.

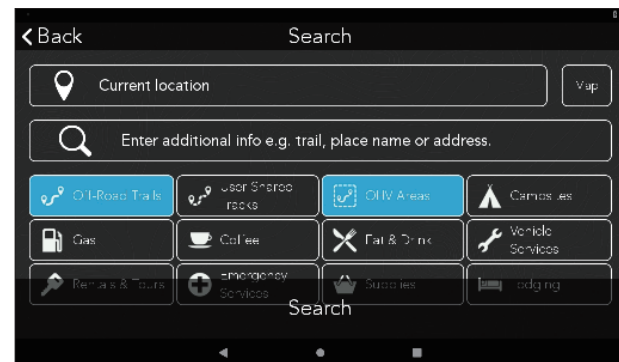
**Note:** The first time the device calculates its location can take up to 1 minute. Subsequent times will be 15 seconds on average.

## 6. Search For Trails.

Your TRX helps you filter for Trails, Tracks, Trips, or POIs around you. You can also search for map data in other locales no matter their distance from your current location.



1. Tap **Search**  from the TRX Dashboard.
2. Search for an Address, Trail, or other location that you want to get to.
3. Tap any desired filter button > tap **Search**.
4. Tap individual items in the results list.
5. Tap **Save** to add items of interest to your plan list.

To follow saved Trails or Tracks, go to your plan list on the TRX Dashboard > **Journal**  > **Plans**.








## Log Your Tracks.

1. Tap **Map** from the TRX Dashboard. The Map Screen opens to free driving mode.
2. Tap  to start Tracking or  to pause Tracking.



## Take Photos and Videos.

To take photos and videos with your TRX during the Track or along a Trail:

1. Tap  on the Map screen.
2. Tap  to begin capturing video footage or tap  to take a photo.




**Note:** The photos and videos are automatically saved to your device. To access your photos and videos, swipe up from the bottom of the device's Home screen > tap **Files** > **DCIM** folder.

## Auto record

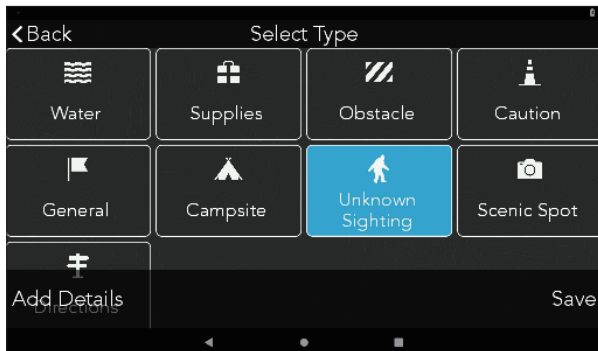
You can enable "Auto record" to capture video footage automatically along the Trail.

1. Plan your Trail.
2. Tap **Follow** > **Start to End** or **End to Start**.
3. Tap **Begin** > select the recording mode: **Normal recording**, **Normal recording with gauge** or **Timelapse recording**.
4. When you are approaching the Trail, select **Stay at TRX** or **Go to recording view** when prompted. Your TRX will automatically start recording when you begin the Trail.


## Mark Waypoints.

1. Tap  to leave Waypoints when Tracking your route or while you're stopped on a Track or Trail.
2. Tap any desired filter button.
3. Tap **Add Details** to select from the following Waypoint options:


<b>Current Position</b>	Set a Detail Waypoint marker at your location.
<b>Point on Map</b>	Set a Waypoint marker anywhere on the map.
<b>Coordinates</b>	Use Lat/Long coordinates to set Waypoint.
<b>Audio</b>	Record and save a message about your location.
<b>Add Photo</b>	Add photo(s) of your location.
<b>Comment</b>	Add comment to the location.



## Backtrack.

Tap  to follow the Track you just created back to its start, in reverse.

## Finish and Save Track.

1. Tap  while Tracking.
2. Enter a name for the track.
3. Enter details to calculate a difficulty rating.
4. Tap **Save** to see your stats and achievements.

**Note:** Entering Track details is optional when you first save the Track, but mandatory before publishing a Track on [www.TRXTrailhead.com](http://www.TRXTrailhead.com).



## Using the Journal.

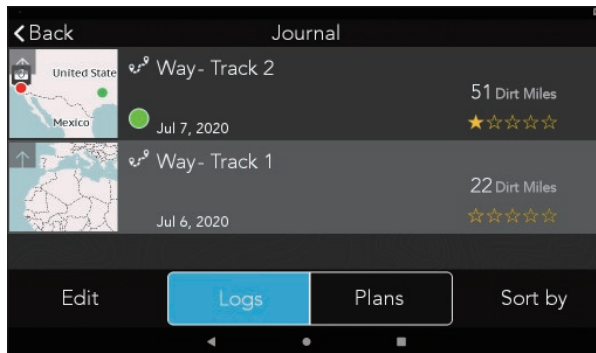
Everything you save is kept in your Journal.

### Logs

Your Logs shows your completed Tracks, Trips, and Waypoints in chronological order with the most recent at the top (you can sort the items in your Logs at any time).

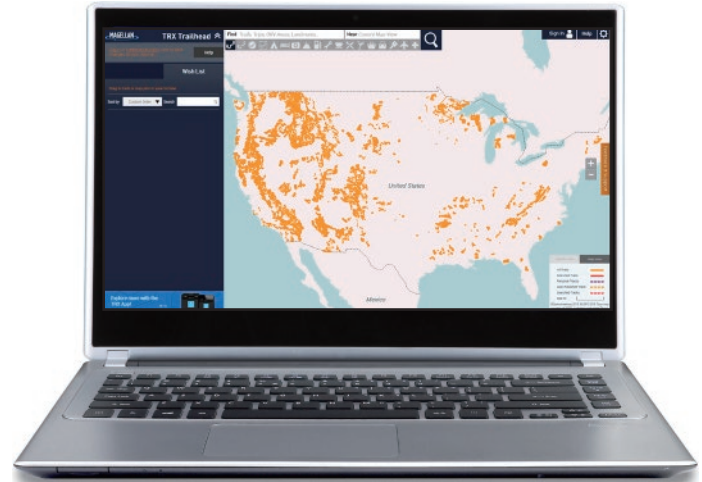
### Plans

The Wish List shows Routes, Trails, and POIs that you save in Search.



## TRX Trailhead.

Go to [www.TRXTrailhead.com](http://www.TRXTrailhead.com) to view your Journal, plan custom routes to follow, share your Tracks with other TRX users, and more.



Learn all about TRX Trailhead at:  
[https://www.magellangps.com/  
about-trxtrailhead](https://www.magellangps.com/about-trxtrailhead)

## **Magellan Limited Warranty**

All Magellan global positioning system (GPS) receivers are navigation aids, and are not intended to replace other methods of navigation. The purchaser is advised to perform careful position charting and use good judgment. READ THE USER GUIDE CAREFULLY BEFORE USING THE PRODUCT.

### **1. MAGELLAN WARRANTY**

(a) MitAC Digital Corp. ("Magellan") warrants its GPS receivers and hardware accessories to be free from defects in material and workmanship and will conform to its published specifications for the product for a period of one year from the date of original purchase. THIS WARRANTY APPLIES ONLY TO THE ORIGINAL CONSUMER PURCHASER OF THIS PRODUCT.

(b) In the event of a defect, Magellan will, at its discretion, repair or replace the hardware product with a product of like kind or quality, which may be new or reconditioned, with no charge to the purchaser for parts or labor. Magellan's limit of liability under the limited warranty shall be the actual cash value of the product at the time the purchaser returns the product to Magellan for repair less a reasonable amount for usage, as determined by Magellan in its sole discretion. The repaired or replaced product will be warranted for 90 days from the date of return shipment, or for the balance of the original warranty, whichever is longer.

(c) Magellan warrants that software products or software included in hardware products will be free from defects in the media for a period of 30 days from the date of shipment and will substantially conform to the then current user documentation provided with the software (including updates thereto). Magellan's sole obligation shall be the correction or replacement of the media or the software so that it will substantially conform to the then-current user documentation. Magellan does not warrant the software will meet purchaser's requirements or that its operation will be uninterrupted, error-free or virus-free. The purchaser assumes the entire risk of using the software.

### **2. PURCHASER'S REMEDY**

PURCHASER'S EXCLUSIVE REMEDY UNDER THIS WRITTEN WARRANTY

OR ANY IMPLIED WARRANTY SHALL BE LIMITED TO THE REPAIR OR REPLACEMENT, AT MAGELLAN'S OPTION, OF ANY DEFECTIVE PART OF THE RECEIVER OR ACCESSORIES WHICH ARE COVERED BY THIS WARRANTY. REPAIRS UNDER THIS WARRANTY SHALL ONLY BE MADE AT AN AUTHORIZED MAGELLAN SERVICE CENTER. ANY REPAIRS BY A SERVICE CENTER NOT AUTHORIZED BY MAGELLAN WILL VOID THIS WARRANTY.

### **3. PURCHASER'S DUTIES**

For repair or replacement on a Magellan product the purchaser must obtain a Return Materials Authorization (RMA) number from Magellan Technical Support or by submitting a repair request through our website at [www.magellanGPS.com](http://www.magellanGPS.com), prior to shipping. The purchaser must return the product postpaid with a copy of the original sales receipt, purchaser's return address and the RMA number clearly printed on the outside of the package to the Authorized Magellan Service Center address provided by Magellan with the RMA number. Magellan reserves the right to refuse to provide service free-of-charge if the sales receipt is not provided or if the information contained in it is incomplete or illegible or if the serial number has been altered or removed. Magellan will not be responsible for any losses or damage to the product incurred while the product is in transit or is being shipped for repair. Insurance is recommended. Magellan recommends the use of a trackable shipping method such as UPS or FedEx when returning a product for service.

### **4. LIMITATION OF IMPLIED WARRANTIES**

Except as set forth in item 1 above, all other expressed or implied warranties, including those of fitness for any particular purpose or merchantability, are hereby disclaimed AND IF APPLICABLE, IMPLIED WARRANTIES UNDER ARTICLE 35 OF THE UNITED NATIONS CONVENTION ON CONTRACTS FOR THE INTERNATIONAL SALE OF GOODS. Some national, state, or local laws do not allow limitations on implied warranty on how long an implied warranty lasts, so the above limitation may not apply to you.

### **5. EXCLUSIONS**

The following are excluded from the warranty coverage:

(a) periodic maintenance and repair or replacement of parts due to normal wear and tear;

- (b) batteries;
- (c) finishes;
- (d) installations or defects resulting from installation;
- (e) any damage caused by (i) shipping, misuse, abuse, negligence, tampering, moisture, liquids, proximity or exposure to heat, or improper use; (ii) disasters such as fire, flood, wind, and lightning; (iii) unauthorized attachments or modification;
- (f) service performed or attempted by anyone other than an authorized Magellan Service Center;
- (g) any product, components or parts not manufactured by Magellan;
- (h) that the receiver will be free from any claim for infringement of any patent, trademark, copyright or other proprietary right, including trade secrets
- (i) any damage due to accident, resulting from inaccurate satellite transmissions. Inaccurate transmissions can occur due to changes in the position, health or geometry of a satellite or modifications to the receiver that may be required due to any change in the GPS. (Note: Magellan GPS receivers use GPS or GPS+GLONASS to obtain position, velocity and time information. GPS is operated by the U.S. Government and GLONASS is the Global Navigation Satellite System of the Russian Federation, which are solely responsible for the accuracy and maintenance of their systems. Certain conditions can cause inaccuracies which could require modifications to the receiver. Examples of such conditions include but are not limited to changes in the GPS or GLONASS transmission.)

The opening, dismantling or repairing of this product by anyone other than an authorized Magellan Service Center will void this warranty.

**6. EXCLUSION OF INCIDENTAL OR CONSEQUENTIAL DAMAGES**

- (a) MAGELLAN SHALL NOT BE LIABLE TO PURCHASER
- (b) OR ANY OTHER PERSON FOR ANY INDIRECT, INCIDENTAL OR CONSEQUENTIAL DAMAGES WHATSOEVER, INCLUDING BUT NOT LIMITED TO LOST PROFITS, DAMAGES ARISING FROM A DELAY OR LOSS OF USE, OR OUT OF THE BREACH OF THIS WARRANTY OR ANY IMPLIED WARRANTY EVEN IF CAUSED BY THE NEGLIGENCE OR ANOTHER FAULT OF MAGELLAN OR OUT OF THE NEGLIGENT USAGE OF THE PRODUCT. IN NO EVENT WILL MAGELLAN BE HELD

RESPONSIBLE FOR SUCH DAMAGES, EVEN IF MAGELLAN HAS BEEN ADVISED OF THE POSSIBILITY OF SUCH DAMAGES.

- (c) Some national, state, or local laws do not allow the exclusion or limitation of incidental or consequential damages, so the above limitation or exclusion may not apply to you.

**7. COMPLETE AGREEMENT**

(a) This written warranty is the complete, final and exclusive agreement between Magellan and the purchaser with respect to the quality of performance of the goods and any and all warranties and representations. THIS WARRANTY SETS FORTH ALL OF MAGELLAN'S RESPONSIBILITIES REGARDING THIS PRODUCT. THIS WARRANTY GIVES YOU SPECIFIC RIGHTS. YOU MAY HAVE OTHER RIGHTS WHICH VARY FROM LOCALITY TO LOCALITY AND CERTAIN LIMITATIONS CONTAINED IN THIS WARRANTY MAY NOT APPLY TO YOU.

- (b) If any part of this limited warranty is held to be invalid or unenforceable, the remainder of the limited warranty shall nonetheless remain in full force and effect.

**8. CHOICE OF LAW**

This limited warranty is governed by the laws of the State of California, without reference to its conflict of law provisions or the U.N. Convention on Contracts for the International Sale of Goods, and shall benefit Magellan, its successors and assigns. This warranty does not affect the consumer's statutory rights under applicable laws in force in their locality, nor the customer's rights against the dealer arising from their sales/purchase contract.

For further information concerning this limited warranty, please visit Magellan's website ([trxsupport.magellangps.com](http://trxsupport.magellangps.com)) or contact:

MiTAC Digital Corp.  
USA & Canada: 877-255-4161

## Need Technical Support?

Go to [trxsupport.magellangps.com](https://trxsupport.magellangps.com) for online troubleshooting and feedback.

If you can't find a solution there, e-mail us at [trxsupport@magellangps.com](mailto:trxsupport@magellangps.com) or call our TRX Support Line at **877-255-4161**.



Connect with us  
[@MagellanTRX](#)



MiTAC Digital Corporation

[www.magellanGPS.com](https://www.magellanGPS.com)

© 2020 MiTAC Digital Technology Corporation ("MiTAC"). The Magellan logo and Magellan are registered trademarks of MiTAC, and OneTouch is a trademark of MiTAC and are used under license by MiTAC. All rights reserved. All other trademarks and registered trademarks are property of their respective owners.

